



DREAM YACHT
WORLDWIDE

Base Guide

EVERYTHING YOU NEED TO KNOW TO ENJOY YOUR NEXT DREAM DESTINATION



THE CARIBBEAN | GUADELOUPE

BASE ADDRESS

Bas du Fort

1 Porte de la Marina

97110

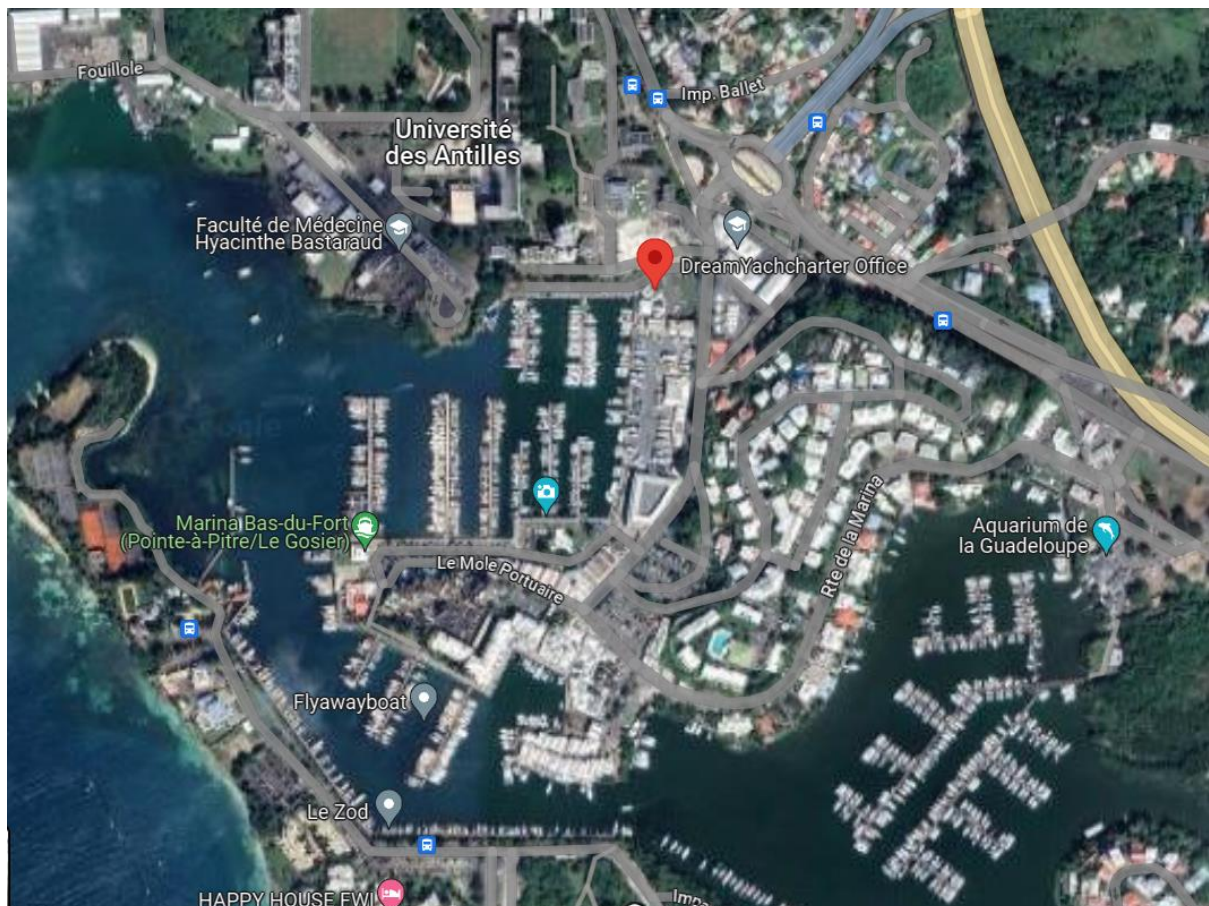
Pointe-à-Pitre

GPS POSITION: 16°13'22"N - 61°31'37"W

OPENING HOURS: 8am– 6pm

PONTOON ACCESS WITH A BADGE: Access to our offices and pontoons is now secured by an electric gate managed by the marina office and operating only with a badge. The gate is closed every day of the week from 6 p.m. to 7 a.m. and every weekend. Any customer arriving outside base opening hours will not be able to board. Our transfers are now available during closing hours because our taxis have an access badge.

BASE MAP



BASE CONTACTS

If you need support while on your charter, contact the base immediately using the contact details in this guide. Please contact your booking agent for all requests prior to your charter.

BASE MANAGER & CUSTOMER SERVICE:

Chef de base: Guillaume Moquet

Phone: +590 690 818 168

CUSTOMER SERVICE MANAGER:

Maida Ponchateau

Phone: +590 590 221 930

BASE FACILITIES

- | | |
|---|---|
| <input checked="" type="checkbox"/> Electricity | <input checked="" type="checkbox"/> Luggage storage |
| <input checked="" type="checkbox"/> Water | <input checked="" type="checkbox"/> Restaurant |
| <input checked="" type="checkbox"/> Toilets | <input checked="" type="checkbox"/> Bar |
| <input checked="" type="checkbox"/> Showers | <input checked="" type="checkbox"/> Supermarket / Grocery store |
| <input checked="" type="checkbox"/> Laundry | <input checked="" type="checkbox"/> ATM |
| <input type="checkbox"/> Swimming pool | <input checked="" type="checkbox"/> Post Office |
| <input checked="" type="checkbox"/> Wi-Fi | |

BASE INFORMATION

LICENSE

Sailing license required: No Yes

PAYMENT

The base can accept: Visa MasterCard Amex Cash

EMBARKATION TIME

Embarkation time is at 5:30pm. At 8:30am the next morning you will have a technical briefing (45mins) and a chart briefing (30mins).

YACHT BRIEFING



The chart and technical briefing take approximately one hour. All briefings are conducted on the chartered yacht and will take 40-90 minutes, depending on yacht size and crew experience

The team will give a detailed walk-through of your yacht's technical equipment, information about safe and accurate navigation, including the yacht's navigational instruments, as well as mooring, anchorage and itinerary help. The safety briefing introduces the safety equipment and your yacht's general inventory.

STOP OVERS

For all DYW charters starting and/or ending in Guadeloupe, the first and last night at the marina is free of charge.

DISEMBARKATION TIME

Checkout is at 9am. To help make check out as smooth as possible, we ask that the follow is carried out when you return the boat:

- Refuel the boat and the dinghy
- Empty the fridge and remove all the garbage from the boat
- All snorkel gear should be free of sand and stowed on the dock
- Put all the dirty linens into pillowcases and place in salon area

The team will inspect your yacht's equipment and a general visual check of its interior and exterior. A diver will check its hull, keel, rudder(s) propeller(s) and /or bow thruster

Disembarkation will be at 10am.

BAGGAGE

Please only take soft bags and not suitcases, as they would be too cumbersome onboard.

BASE AND EMERGENCY CONTACTS

- Base emergency telephone number: +590 690 818 168
- Marina emergency telephone number: +590 690 351 919
- Coastguard emergency telephone number: 196
- VHF marina channel: 9
- VHF emergency channel: 16



HOW TO GET THERE?

ACCESS BY PLANE

Pointe-à-Pitre International Airport (PTP): The airport is 10km from the base, which is a 30-minute journey by car/shuttle. There are regular flights from many eastern US cities, Miami (3 hours 35 minutes) and New York (4 hours 30 minutes) with American. Many connecting flights are offered through neighbouring islands including Antigua, and St. Martin.

Please check the schedule on the [airport website](#).

TRANSFERS FROM THE AIRPORT TO OUR BASE

If you need organized transfer from the airport, please contact your aftersales team. Major car rental companies operate from the airport, please refer to airport website for info, working hours and contacts. Taxis are regularly available in front of the airport buildings.

ACCESS BY ROAD

Follow Pointe-à-Pitre signs then follow N1 in the direction of Sainte Annes. Take exit "Marina Bas Du Fort". After the roundabout, take the 2nd exit on your right hand side. We are in the beige house located in the parking lot.

ACCESS BY BUS

Airport to Pointe-à-Pitre, Gosier, Line AE1 - AE3. Buses leave every 30 min and you need to exit the bus at the "Blanchard" roundabout.

Information subject to change without notice.

PROVISIONING & RECOMMENDATIONS

BASE PROVISIONING SERVICE

This base provides a provisioning service: Yes No

- **Direct delivery on board:**
Paradise Foods

Whether you're anchored in a serene bay or docked at a bustling pier, Paradise Foods' reliable delivery service ensures that **your provisions arrive within just a few hours**. At Paradise Foods, they understand the importance of high-quality ingredients and exceptional service to enhance your boating experience.



Available in most marinas and anchorages in Martinique, Guadeloupe, the Grenadines and soon also Grenada!

- An entire supermarket in one app - hundreds of products!
- At supermarket prices.
- Delivery directly to your boat. Tiny delivery fee of only 5 €.
- Order any time in advance or enjoy same day delivery when you arrive.
- Easy mobile payment options - Credit Card, PayPal, Apple Pay, Google Pay.
- Customer service available in English, French, German or Polish: WhatsApp +596 969 76 88 66 or hello@paradisefoods.com

We recommend you provision in advance to have groceries ready when you arrive.

Order in the app

Use the promo code “**dream30**” to get a 30 € discount for orders >300 € placed in the app



Want to order via Excel list instead?

You can download Paradise Foods’ product list here:

- [Guadeloupe >> https://paradisefoods.com/list-dy-gd-en/](https://paradisefoods.com/list-dy-gd-en/)

Information subject to change without notice.

LOCAL SUPERMARKET

Supermarché Carrefour Market
Le Mole Portuaire
Marina Bas du Fort
Pointe-à-Pitre
97110

Day	Time
Monday – Saturday	8am – 7:45pm
Sunday	8am – 12:45pm

Information subject to change without notice.

FUEL AND WATER

Fuel and water are conveniently available at the fuel station at the entrance of the marina. Water is free at the pontoon. While sailing, you can find water at: Les Saintes, Marina de Rivière Sens, Marina de Saint François, Antigua (English and Jolly Harbor), Dominica (Portsmouth). There is fuel at: Marina de Rivière Sens, Marina de Saint Francois, Antigua (English and Jolly Harbor).

HOTEL SUGGESTIONS:

- **Village Soleil La Marina**
- Route de la Marina, Pointe-à-Pitre

RESTAURANT SUGGESTIONS:

- **Quai Ouest**
- **Zoo Rock Café**
- **Le Plaisancier**

AREA GUIDE

LOCAL AREA INTRODUCTION

A Guadeloupe sailing charter is ideal for those who appreciate nature and want to escape to the authentic “less-traveled” Caribbean. More than two-thirds of Guadeloupe is a nature reserve, which makes it a special place for those who love wildlife.

Sailing Guadeloupe’s French archipelago offers the chance to discover small nearby islands, such as Marie Galante and Les Saintes. If you want to sail further afield, you can head north to Antigua or south to Dominica.

TOP THINGS TO DO IN GUADELOUPE:

1. **Sail the island of 100 windmills:** A short sail will deliver you to the quaint, undeveloped island of Marie-Galante. The landscape includes sugarcane fields, rum distilleries and up to 100 old windmills, providing a scenic and peaceful respite. Head to Saint Louis fishing village and snorkel with colorful fish.
2. **See the beauty of Dominica:** Don’t miss the opportunity to see this rugged, mountainous island nation, well-known as the “nature island” with its hot springs and tropical rainforests.
3. **Enjoy the anchorages of Les Saintes:** This group of tiny islands is reminiscent of St. Barts, with its red tiled roofs and French culture. Spend the day exploring and sampling French cuisine at the many restaurants. Don’t miss Fort Napoléon and Pompierre Beach on Terre-de-Haut.

4. Petite Terre Islands National Nature Reserve: We'd recommend sailing to this nearby nature reserve so you can delight in this all-natural Eden of flora and fauna. Most notable here may be the Lesser Antillean Iguana, but sea turtles are often spotted here as well. Be sure to reserve a mooring in advance.
5. Snorkel at Cousteau Marine Park: Make for Pigeon Island and explore the coral garden, known as Reserve Cousteau. Captain Jacques-Yves Cousteau used this area for diving tests, where you can see turtles, staghorn and elkhorn coral and a wide variety of reef fish. You can even see a bronze statue of Cousteau 12m below the surface.

CURRENCY: The currency used in Guadeloupe and the French Lesser Antilles islands is the Euro, while it is the Eastern Caribbean Dollar for the other islands (Dominica, St Lucia, etc.).

VOLTAGE: 220V

DIALING CODE: +590

CUSTOMS CLEARANCE

If you sail Guadeloupe the customs clearance is mandatory except for Marie Galante, Les Saintes and Petite Terre. You can clear customs at our marina.

Furthermore, due to regulations enforced by BVI authorities, only DYW boats located in the BVI can charter there. Clients not following this rule and entering the BVI on a DYW boats chartered in another Caribbean base like USVI, St Martin, Antigua, etc... will be in breach of contract terms & conditions, & responsible to pay any fine resulting of it.

INTERNET

You'll find free Wi-Fi at the marina. Getting online is easy with plenty of Wi-Fi spots in restaurants and cafes, but you may find that speeds vary.

ENVIRONMENT

- Respect your surroundings and leave only footprints in the sand
- Only use the engine or genset when needed (fill up your tanks for the water maker at the docks when you can)
- Recycle your garbage in the correct containers at the marina
- Respect regulations around marine reserves and private islands where disembarking is not permitted

REGULATIONS

There is no night sailing permitted in Guadeloupe.

Information subject to change without notice.

SAILING CONDITIONS

SAILING AREA

Guadeloupe is part of the Leeward Islands and stands out because of its butterfly shape. The eastern wing, Grand-Terre, features Pointe-à-Pitre, the island's biggest city and center of tourism. The western wing, called Basse-Terre, is less developed and dominated by an impressive national park. A narrow channel called the Salt River separates the two halves of the island. The sailing area is between Antigua and Dominica.

Nearby is the island of Marie Galante, which offers fantastic snorkeling and scenic sugarcane fields. For anchorages, head to Les Saintes and take a stroll on Terre-de-Haut.

If you love marine life, Guadeloupe offers Jacques Cousteau's Underwater Reserve in the waters close to Pigeon Island with its abundance of colorful coral forests and marine life. This underwater world is considered one of the best dive sites you can experience and is not to be missed if you're sailing Guadeloupe.

WEATHER

The best time to visit Guadeloupe is between January and March when the temperature and humidity eases and there is less rain. The dry season is between December and May with the driest month in March.

Between December and April can be popular but there is a risk of rain, while the May to October period is hot, humid and rainy.

The temperatures in Guadeloupe average 74°F in winter and 87°F in the summer. Temperatures at night can drop so make sure you pack a light jacket if you're on your yacht charter in Guadeloupe.

TEMPERATURE

Climate in Guadeloupe:

- Summer high: The July high is around 87°F
- Winter low: The December low is 74°F

WIND SYSTEMS

From January to April, the northeast trade winds blow steadily and with moderate intensity, while in the latter period the winds are more irregular and may have some breaks. Between them there are two transitional periods: from mid-November to early January (when the northeast wind starts to blow, the temperature decreases a bit and the weather gets better) and from mid-April to Mid-June (when both the temperature and the frequency of downpours gradually increase).

LOCAL FORECAST

You can find Guadeloupe weather forecasts on the [MeteoFrance](#) or [WindGuru](#) websites.